



ECOLOGICAL SERVICES

ABOUT US

Applied Ecology, Inc. (AEI) is a woman- and minority-owned small business formed in 2009. We provide a full spectrum of scientific and technical services to inform ecosystem-level solutions. Our vision is to provide scientifically sound solutions using innovative technologies for challenging environmental problems. We focus on serving municipal, federal, and private sector clients in environmental resource management, ecological studies, water resources, and utilities. AEI is uniquely positioned to provide highly specialized services typically available from large firms while maintaining the personal availability and responsiveness of a small firm. We take pride in providing high-quality work at a great value.

DUNS #:

831443374

CAGE CODE:

6Y5T5

NAICS:

541620 (Primary, Environmental Consulting Services), 541360, 541370, 541380, 541511, 541519, 541611, 541690, 541990, 518210, 562910, 611420, 115310

DESIGNATIONS:

WOSB, DBE, EDWOSB, MBE, 8(a)

ASSESSMENT

- Wetland delineation and mitigation assessment
- Benthic resource surveys (SAV, EFH, coral)
- Wetland mitigation site feasibility
- Gopher tortoise recipient site evaluations and permitting
- Sand skink habitat assessment and coverboard surveys
- Natural resource damage assessment
- Sea turtle lighting evaluations and compliance assessment

MONITORING

- Wetland mitigation site monitoring
- Wetland planting and restoration
- SWFWMD Wetland Assessment Procedure (WAP) Monitoring
- Bald eagle nest monitoring
- Sea turtle nest monitoring and relocation
- Marine pipeline cover remediation monitoring

REGULATORY CLEARANCE

- Environmental Resource Permitting
- Section 404 Dredge and fill permitting
- Project Development and Environment (PD&E) studies
- National Environmental Policy Act (NEPA) clearance
- Gopher tortoise relocation permits
- Bald Eagle permitting
- Permit compliance monitoring

OUR CLIENTS:



HEADQUARTERS:

122 Fourth Ave., Suite 104
Indialantic, FL 32903
321-499-3336

BRANCH OFFICE:

11723 Orpington Street, Suite 106,
Orlando, FL 32817
321-229-7407

support@appliedecologyinc.com
www.appliedecologyinc.com

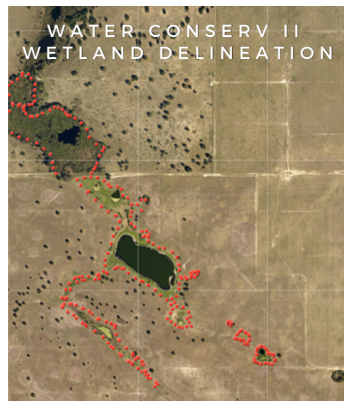


ECOLOGICAL SERVICES PROJECT EXPERIENCE

ASSESSMENT PROJECT EXPERIENCE



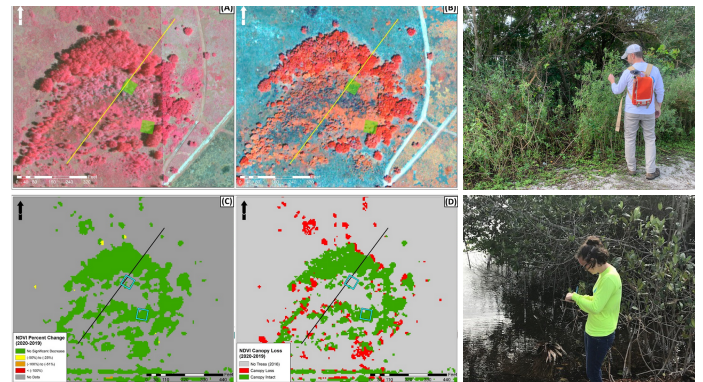
- Environmental Support Services for the Cocoa Beach Capping and Dredging Project for City of Cocoa Beach (*City of Cocoa Beach*)
- CCAFS Biological Assessment and Florida beach mouse survey (*CCAFS*)
- NASA Parkway Bridge Replacement PD&E and Permitting (*FDOT/NASA*)
- Water Conserve II Reservoir Environmental Support (*City of Orlando*)
- Ecological Assessments for the Deltona North Water Treatment Plant Improvements (*Volusia County*)
- Shuttle Landing Facility Phase 2 and Phase 3 Development (*Space Florida and FDOT*)
- I-4 Beyond the Ultimate Environmental Assessment and Permit Support (*FDOT*)
- Environmental Resource Permitting and Wetland Restoration at Eglin Air Force Base (*AFCEE*)
- Wetland Assessment Services for the Palmetto Pipeline (*Kinder Morgan*)
- ERP Development and Ecological Assessment for the Dredging and Excavation of Contaminated Wetlands (*Brownville Wood Treatment Facility*)
- Gopher Tortoise Survey and Burrow Excavation (*U.S. Tennis Association*)
- I-4 Beyond the Ultimate sand skink cover board survey (*FDOT*)



MONITORING PROJECT EXPERIENCE



- Brick Road Mitigation Bank Ecological Compliance Monitoring
- West Florida Aggregates WAP Monitoring (*West Florida Aggregates*)
- Tallevast Long Term Water Level and Wetland Monitoring (*Lockheed Martin*)
- C.W. Bill Young Regional Reservoir WAP monitoring and remote sensing analysis (*Tampa Bay Water*)



SPECIES SPECIFIC EXPERIENCE



- Gopher Tortoise Authorized Agent
- Species specific survey experience includes gopher tortoise, Florida Scrub-jay, sand skink coverboard surveys, beach mouse, sandhill crane, bald eagle, and shorebirds
- FWC Permitting, USFWS Consultation, NMFS Consultation and Checklist



HEADQUARTERS:

122 Fourth Ave., Suite 104
Indialantic, FL 32903
321-499-3336

BRANCH OFFICE:

11723 Orpington Street, Suite 106,
Orlando, FL 32817
321-229-7407

support@appliedecologyinc.com
www.appliedecologyinc.com

