



# GIS AND REMOTE SENSING SERVICES

## ABOUT US

Applied Ecology, Inc. (AEI) is a woman- and minority-owned small business formed in 2009. We provide a full spectrum of scientific and technical services to inform ecosystem-level solutions. Our vision is to provide scientifically sound solutions using innovative technologies for challenging environmental problems. We focus on serving municipal, federal, and private sector clients in GIS Program implementation, environmental resource management, ecological studies, water resources, and utilities. As an ESRI Business Partner, AEI is a trusted GIS services provider to expand clients' capabilities using state-of-the-art geospatial and remote sensing solutions. We take pride in providing high-quality work at a great value while maintaining the personal availability and responsiveness of a small firm.

### DUNS #:

831443374

### CAGE CODE:

6Y5T5

### NAICS:

**541620 (Primary, Environmental Consulting Services),** 541360, 541370, 541380, 541511, 541519, 541611, 541690, 541990, 518210, 562910, 611420

### DESIGNATIONS:

WOSB, DBE, EDWOSB, MBE, 8(a)

## GEOSPATIAL AND DATA MANAGEMENT

- Cloud-based (AWS) solutions
- ArcGIS Enterprise solutions
- Geodatabase design and implementation
- GIS data conversion, migration, conflation, and visualization
- Process automation and custom tool development
- Database quality management using ESRI Data Reviewer
- GIS mapping and analytics
- Geostatistical analyses
- SDSFIE data management and compliance
- Infrastructure mapping and inspection
- Asset management

## REMOTE SENSING

- Aerial photointerpretation and feature extraction
- Image georeferencing and rectification
- Multi and hyperspectral analysis
- Change detection and habitat mapping
- Invasive species management
- Land use/cover mapping
- 2D and 3D terrain modeling and canopy analysis
- Digital Elevation Terrain Modeling (DTED)
- LiDAR applications

### OUR CLIENTS:



### HEADQUARTERS:

122 Fourth Ave., Suite 104  
Indialantic, FL 32903  
321-499-3336

### BRANCH OFFICE:

11723 Orpington Street, Suite 106,  
Orlando, FL 32817  
321-229-7407

support@appliedecologyinc.com  
www.appliedecologyinc.com



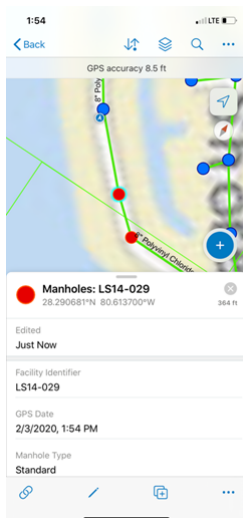
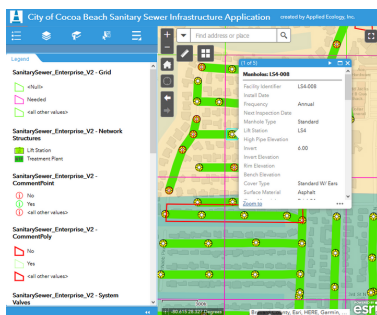
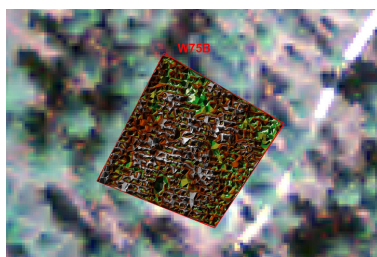
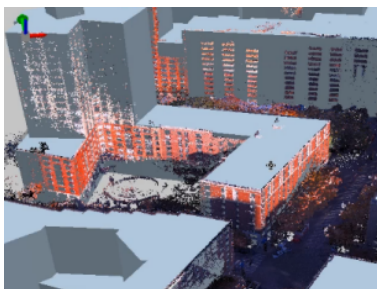


# GIS AND REMOTE SENSING PROJECT EXPERIENCE

## GEOSPATIAL DATA INTEGRATION PROJECT EXPERIENCE



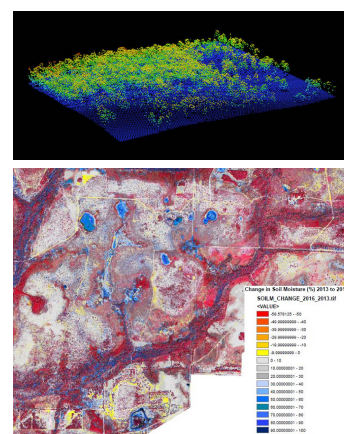
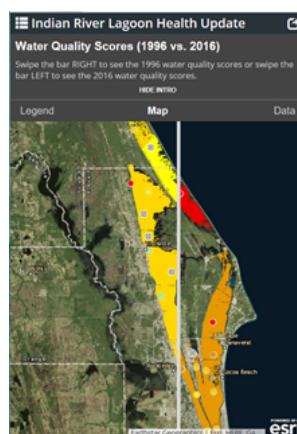
- Cape Canaveral Air Force Station LiDAR Survey Integration (*45CONS/LGCAC, USAF*) – *Currently under TRACES*
- Lowry Park Zoo Utility Mapping (*City of Tampa*)
- Stormwater Asset Management Program (SWAMP) Development (*Brevard County*)
- Phase I Comprehensive Stormwater Asset Management Plan Database (*City of Largo*)
- GIS Stormwater Asset Mapping Program Development & Implementation (*Town of Malabar*)
- Environmental Management Permitting Database Development (*Tampa Bay Water*)
- Traffic Sign Inventory (*City of Madeira Beach*)



## REMOTE SENSING PROJECT EXPERIENCE



- C.W. Bill Young Regional Reservoir WAP monitoring and remote sensing analysis (*Tampa Bay Water*)
- Impervious Area Extraction for the Development of a Stormwater Utility (*Martin County*)
- Tsala Apopka Vegetation Survey (*PB Americas for FWC*)
- Geomorphic Investigation of Tidal Inlets: Applications in Coastal Engineering (*USACE ERDC*)
- LiDAR Applications for Restoration and Conservation of SE Pine Forest (*UCF/NASA*)



## GIS CLOUD-BASED SOLUTIONS PROJECT EXPERIENCE



- GIS Cloud-Based Infrastructure Program Implementation (*City of Rockledge*)
- GIS Infrastructure System Setup/Cloud Services (*City of Cocoa Beach*)
- Recovery Analysis Cloud-Based GIS Program and Application (*Tampa Bay Water*)
- Needs Assessment for a Water Demand Management Application (*Tampa Bay Water*)
- State of the Indian River Lagoon Cloud Application (*Indian River Lagoon NEP*)
- Indian River Lagoon Ecological Assessment Story Map (*Marine Resources Council*)

### HEADQUARTERS:

122 Fourth Ave., Suite 104  
Indialantic, FL 32903  
321-499-3336

### BRANCH OFFICE:

11723 Orpington Street, Suite 106,  
Orlando, FL 32817  
321-229-7407

support@appliedecologyinc.com  
www.appliedecologyinc.com

