



# ENVIRONMENTAL SERVICES

## ABOUT US

Applied Ecology, Inc. (AEI) is an **8(a)**, woman-owned small business formed in 2009. We provide a full spectrum of scientific, technical, and engineering services to inform and implement ecosystem-level solutions, including:

- Environmental Remediation / Emerging Contaminants
- Environmental Compliance / Permitting
- Water Resources Management
- Natural Resources Management
- Sampling / Analysis of Environmental Media
- Climate Adaptation / Coastal Resiliency
- GIS / Remote Sensing / UAV

We are committed to excellence and creating innovative and flexible solutions for challenging environmental problems. We focus on serving federal, municipal, and private sector clients in environmental compliance, natural resources, remediation, and geospatial applications.

### UEI:

DMRHNPD SKMB8

### CAGE CODE:

6Y5T5

### NAICS:

**541620 (Primary, Environmental Consulting Services)**, 541360, 541330, 541370, 541380, 541511, 541519, 541611, 541690, 541990, 518210, 562910, 611420, 115310

### DESIGNATIONS:

**8(a)**, WOSB, DBE, EDWOSB, MBE

## PROJECT PORTFOLIO

- TMDL Compliance Master Plan and Shoreline Monitoring **(USSF)**
- Spill Prevention Countermeasure and Control Plans **(USAR)**
- Potable Water Survey **(GSA)**
- Air Emissions Inventory **(USAR)**
- Toxics Management Plan **(USAR)**
- Climate Adaptation/Assessment **(USAR & USMCB)**
- Threatened & Endangered Species Management **(USMCB)**
- Forest Management **(USMCB)**
- Hazardous Waste/Hazardous Material Management Plan and Training **(USAR)**
- Environmental Training Plan **(USAR)**
- Aboveground Storage Tank Inspection/Repair **(USCG)**
- West KSC Nutrient Loading Study **(NASA)**
- WWTF Nutrient Assessment **(USSF)**
- County-Wide Water Quality Sampling for PFAS and Priority Pollutants **(Brevard County)**
- Biological Assessment for Shoreline Stabilization **(USAF)**
- Protected Species Assessment and Relocation of the Southeastern Beach Mouse **(USAF)**
- Phase I & II Assessments **(City of Orlando)**
- Heavy Metal Sampling at Dredge Material Management Area **(Brevard County)**
- PFAS of Drinking Water Wells **(City of Lauderhill)**
- Semi-Annual Wastewater Sampling for PFAS **(City of Cocoa Beach)**
- County-wide Groundwater Monitoring and Seepage Study: Allocation of Nutrient Sources **(Brevard County)**
- Site Characterization and Permitting for Capping/Dredging **(City of Cocoa Beach)**
- Watershed Model Development for TMDL Compliance **(FDEP)**
- Biosolids Moratorium Monitoring for PFAS, Metals, and Pharmaceuticals **(Brevard County)**
- Residential Stormwater Quality Evaluation **(Tampa Bay Estuary Program)**
- Sampling of Environmental Muck Dredging Materials for PFAS **(Brevard County)**
- North Merritt Island Storm Surge and Hydrologic Modeling **(Brevard County)**

### OUR CLIENTS:



**HEADQUARTERS:**  
2200 Front St., Suite 300  
Melbourne, FL 32901  
321-499-3336

### BRANCH OFFICES:

Orlando, FL  
Tampa, FL

support@AppliedEcologyInc.com  
www.appliedecologyinc.com



**esri**

Partner Network  
Silver



# ENVIRONMENTAL SERVICES

## WATER RESOURCES

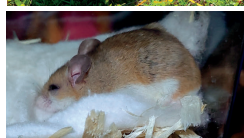
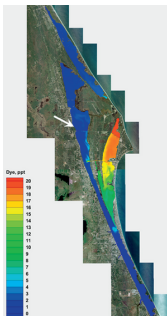
- Plans (SWMPs & SWPPPs)
- TMDL Compliance
- OSTDS Vulnerability Assessments
- Seepage Studies
- Muck, Soil, and Sediment Assessments
- 2-D & 3-D Numerical Modeling
- Hydraulic and Hydrologic Studies

## NATURAL RESOURCES

- Wetland Delineation and Mitigation Assessments
- T&E Species Management
- Ecological Risk Assessment
- Wetland Planting and Restoration
- Forest Management
- Dredge and Fill Permitting
- PD&E studies
- Integrated Natural Resource Management Plans

## CLIMATE ADAPTATION / COASTAL RESILIENCE

- Climate Adaptation for DoD
- Simulations (Wind, Tidal, Storm)
- Shoreline Stabilization
- Feasibility Studies for Nature Based Solutions
- Sediment and Sand Modeling
- Evaluation and Monitoring



## COMPLIANCE / PERMITTING

- Plans (SPCC, FRP, CAA, HW, Toxics)
- CAA (Inventories, Permits)
- NEPA Environmental Assessments / Environmental Baseline Surveys
- CERCLA / RCRA / TSCA / CWA / CAA Compliance
- Hazardous Waste Management
- Regulatory Assistance / Negotiation

## REMEDIATION / EMERGING CONTAMINANTS

- Phase I / Phase II Site Assessments
- Remedial Investigations / Feasibility Studies
- Remediation Alternatives Analysis
- Vapor Intrusion/Vapor Mitigation
- Groundwater monitoring / modeling
- Site Closure / Long term monitoring
- Emergent contaminant substance assessments (PFAS, PPCPs, PCEs)

## SAMPLING & ANALYSIS OF ENVIRONMENTAL MEDIA

- Surface, near-surface, and sub-surface soil
- Sediment
- Surface Water
- Groundwater
- Drinking Water



### HEADQUARTERS:

2200 Front St., Suite 300  
Melbourne, FL 32901  
321-499-3336

### BRANCH OFFICES:

Orlando, FL  
Tampa, FL

support@AppliedEcologyInc.com  
www.appliedecologyinc.com



esri

Partner Network  
Silver