



CAPABILITY STATEMENT

**SBA 8(A) CERTIFIED
WOMAN OWNED SMALL BUSINESS (WOSB)**

UEI: DMRHNPDSKMB8

CAGE: 6Y5T5

COMPANY OVERVIEW

ABOUT US

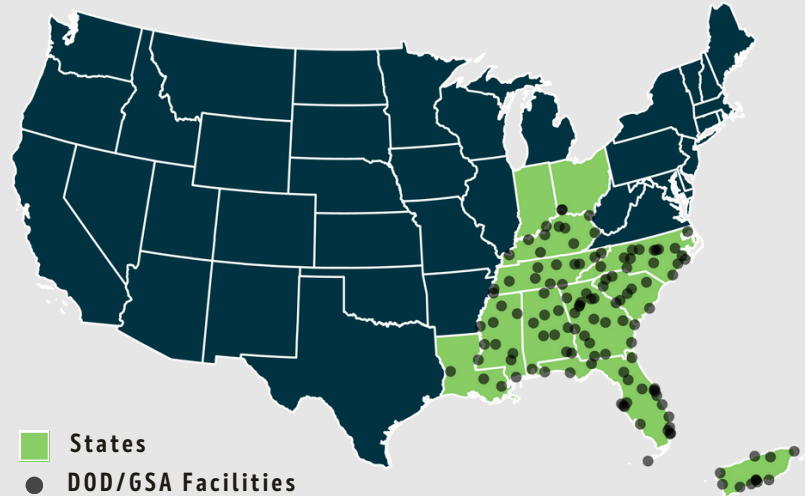
Applied Ecology, Inc. (AEI) is an 8(a), woman-owned small business formed in 2009. We provide a full spectrum of scientific, technical, and engineering services to inform and implement ecosystem-level solutions. We are committed to excellence and creating innovative and flexible solutions for challenging environmental problems for our Federal and local Government clients. We focus on serving federal, municipal, and private sector customers in environmental compliance, natural resource management, water resources management, geospatial applications, remediation, and climate adaptation.

CORE COMPETENCIES

OUR SERVICES

- Environmental Compliance / Permitting
- Coastal Resilience / Climate Change
- Natural Resources
- Water Resources and Engineering
- Environmental Sampling and Analysis
- Environmental Remediation / Emerging Contaminants
- GIS / Remote Sensing

GEOGRAPHIC EXPERIENCE



COMPANY CONTACT



Government Business POC:

Claudia Listopad, Ph.D., GISP
President, Principal Scientist



Headquarters:

780 S Apollo Blvd. Suite 220
Melbourne, FL 32901



Email:

clistopad@AppliedEcologyInc.com



Phone: 321-499-3336

Mobile: 321-848-1212

FEDERAL CONTRACTS

PRIME

**Architect and Engineering
[AE] Services to Support
the Environmental Quality
[EQ] Program, CESAM,
South Atlantic Division**

W9127823R0037 | \$249M

PRIME

**Indefinite Delivery /
Indefinite Quantity (IDIQ) for
Base-Wide Environmental,
Sustainment, and
Modernization**

2021: W9127821D0051 | \$4.5M
2024: W9127824D0016 | 2024: \$4.5M

JV

**Environmental
Remediation
Services, Multiple
Award Task Order
Contract(s) (MATOC)**

8(a): W9127823D0015 | \$30M
SB: W9127823D0005 | \$219M

SUBCONTRACTOR

**Fence-To-Fence
Environmental Services
at PSFB, CCSFS, MTA,
JDMTA, and APAFR –
Water Quality**

140D0423D0071 | \$22M



www.appliedecologyinc.com



321-499-3336



support@AppliedEcologyInc.com



CAPABILITY STATEMENT

SELECTED CURRENT/ PAST PERFORMANCE

FEDERAL PROJECTS

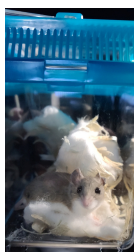
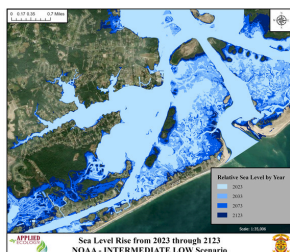
- Stormwater Management & Pollution Prevention Plans - USSF
- Shoreline Monitoring - USSF
- AST Inspection/Repair - USCG
- Living Shoreline Design & Permitting - USMC, USSF
- TMDL Compliance Master Plans - USSF
- Air Emissions Inventory - USAR
- Pre / Post-Construction Weir Monitoring - USSF
- Pre-Dredging Sediment Sampling & Analysis - USAF
- WWTF Nutrient Assessment - USSF
- Potable Water Survey - GSA
- MSGP / MS4 Stormwater Sampling & Inspections - USSF
- HW / HMMP & Training - USAR
- West KSC Nutrient Loading Study - NASA
- Stormwater Improvement Feasibility Study - USSF
- Climate Adaptation / Assessment - USAR, USMC
- T&E Species Management - USMC
- Canal Assessment Plan - USSF
- SPCC Plans - USAR, USCG
- Bat Habitat Assessment - USMC
- Landfill, TSDF, & EOD Sampling - USSF
- Supplemental Site Assessments - USCG
- WWTF Permitting & Efficiency Evaluation - USSF
- Forest Management - USMC
- Environmental Training Plan - USAR
- Stormwater BMP Design - USSF
- Toxics Management Plan - USAR
- NEPA Guidebook & Training - USMC
- Protected Species Assessment and Relocation - USSF



US Army Corps of Engineers®

STATE / MUNICIPAL CONTRACTS

- PFAS and Priority Pollutant Sampling - *Brevard County, FL*
- General Engineering & Professional Services (A&E) - *Southwest Florida Water Management District*
- Semi-Annual PFAS Testing Program - *City of Cocoa Beach, FL*
- Ecological & Environmental Scientific & Technology Support Services - *South Florida Water Management District*
- Ecological Services - *Brevard County, FL*
- Environmental, Ecological, & Biological Support Services - *Indian River County, FL*
- Technical Support & Analysis Services - *FDEP**
- Environmental Services - *Brevard County, FL*
- Stormwater Engineering Services (A&E) - *Orange County, FL**
- Environmental Monitoring & Assessment Consulting Services - *Tampa Bay Water*
- Professional Engineering, Planning, Surveying & Architectural Services (A&E) - *City of Cape Canaveral*
- Water Quality Professional Services - *Orange County, FL**
- Dredging & Sediment Services - *Brevard County, FL*



NAICS

541620 (Primary, Environmental Consulting Services)

| | | | |
|--------|--------|--------|--------|
| 541330 | 541380 | 541611 | 562910 |
| 541360 | 541511 | 541690 | 611420 |
| 541370 | 541519 | 541990 | 115310 |

FEDERAL & STATE CERTIFICATIONS

- SBA 8(a) Certified (Graduation date: March 2030)
- Woman Owned Small Business (WOSB)
- Minority Business Enterprise (MBE)
- Small Disadvantaged Business (SDB)



www.appliedecologyinc.com



321-499-3336



support@AppliedEcologyInc.com