



# GIS & REMOTE SENSING

**SBA 8(A) CERTIFIED  
WOMAN OWNED SMALL BUSINESS (WOSB)**

UEI: DMRHNPDSKMB8  
CAGE: 6Y5T5

## COMPANY OVERVIEW

### ABOUT US

Applied Ecology, Inc. (AEI) is an 8(a), woman-owned small business formed in 2009. We provide a full spectrum of scientific, technical, and engineering services to inform and implement ecosystem-level solutions. We are committed to excellence and creating innovative and flexible solutions for challenging environmental problems for our Federal and local Government clients. We focus on serving federal, municipal, and private sector customers in environmental compliance, natural resource management, water resources management, geospatial applications, remediation, and climate adaptation.

### FEDERAL CONTRACTS

#### USACE-MOBILE

- Architect and Engineering (AE) Services to support the Environmental Quality (EQ) Program, CESAM, South Atlantic Division - Prime
  - W9127823R0037 | \$249M
- IDIQ for Base-Wide Environmental, Sustainment, and Modernization - Prime
  - 2021: W9127821D0051 | \$4.5M
  - 2024: W9127824D0016 | \$4.5M
- Environmental Remediation Services, Multiple Award Task Order Contract(s) (MATOC) - JV
  - 8(a): W9127823D0015 | \$30M
  - SB: W9127823D0005 | \$219M

#### DEPT. OF INTERIOR

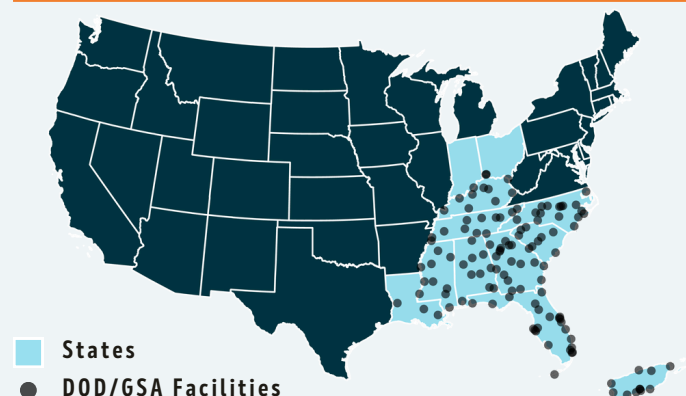
- Fence-To-Fence Environmental Services at PSFB, CCSFS, MTA, JDMTA, and APAFR - Water Quality - Subcontractor
  - 140D0423D0071 | \$22M

### SELECTED PROJECTS

- Sea Level Rise & SLOSH Modeling for Camp Lejeune - USMC
- Installation Climate Resilience Assessment - USAR
- CCSFS LiDAR Survey Integration - USSF
- Climate Adaptation for INRMP - USMC
- Geomorphic Investigation of Tidal Inlets: Applications in Coastal Engineering - USACE ERDC
- Canal Assessment Plan - USSF
- Remote Sensing of Harmful Algal Blooms in the Indian River Lagoon - Brevard County, FL
- Bat Habitat Assessment - USMC
- LiDAR-Based Probable Sinkhole Location Detection for the Peace River Reservoir Feasibility Assessment - Peace River Manasota Regional Water Supply Authority
- Climate Assessment on Facilities & Training Ranges - USMC



### GEOGRAPHIC EXPERIENCE



[www.appliedecologyinc.com](http://www.appliedecologyinc.com)



321-499-3336



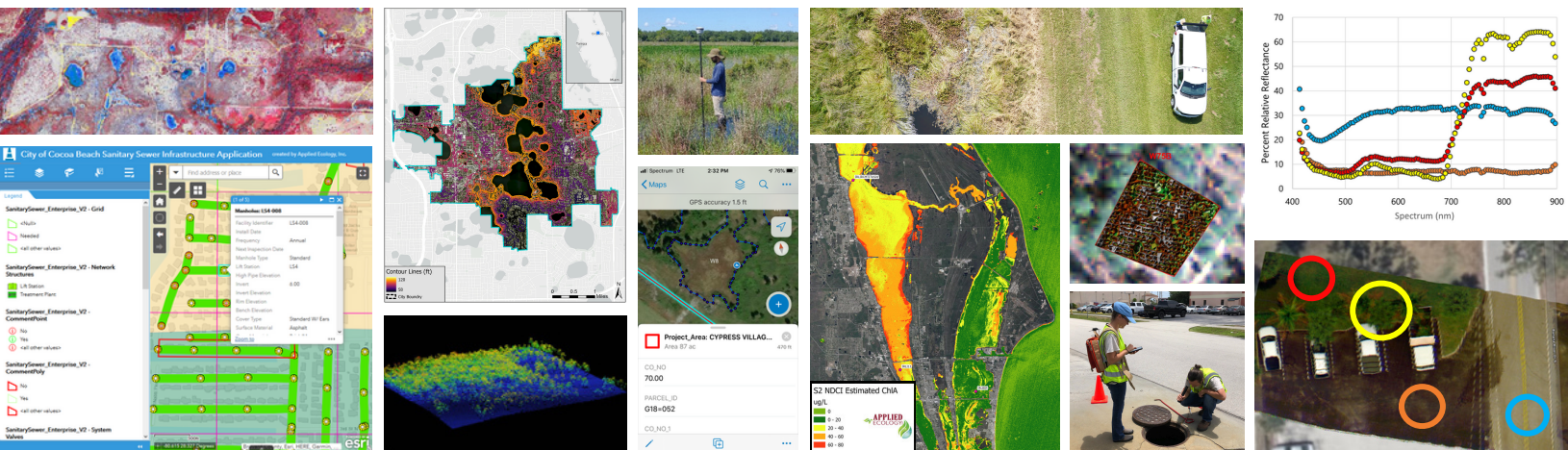
[support@AppliedEcologyInc.com](mailto:support@AppliedEcologyInc.com)

## GEOSPATIAL & DATA MANAGEMENT

- Cloud-based (AWS) Solutions
- ArcGIS Enterprise Solutions
- Geodatabase Design & Implementation
- GIS Data Conversion, Migration, Conflation & Visualization
- Water Resources GIS Applications
- Process Automation & Custom Tool Development
- Database Quality Management Using ESRI Data Reviewer
- GIS Mapping & Analytics
- Geostatistical Analyses
- SDSFIE Data Management & Compliance
- Infrastructure Mapping & Inspections
- Asset Management & Condition Assessments

## REMOTE SENSING

- Aerial Photointerpretation & Feature Extraction
- Image Georeferencing & Rectification
- Multi & Hyperspectral Acquisition & Analysis
- Change Detection & Habitat Mapping
- Invasive Species Management
- Fire Regime Management
- Utility Corridor Mapping
- Land Use / Cover Mapping
- 2D & 3D Terrain Modeling & Canopy Analysis
- LiDAR Applications
- Rapid Response UAV Mapping
- UAV & Satellite Data Acquisition & Processing



## UAV APPLICATIONS

- Invasive Species Mapping
- Harmful Algal Bloom Early Detection
- Wetland Monitoring
- Soil Hydration Assessment
- Habitat Assessment
- Forest Management

*\*NDAA Compliant Drone - DOD approved*

