



# WATER RESOURCES

**SBA 8(A) CERTIFIED  
WOMAN OWNED SMALL BUSINESS (WOSB)**

UEI: DMRHNPDSKMB8  
CAGE: 6Y5T5

## COMPANY OVERVIEW

### ABOUT US

Applied Ecology, Inc. (AEI) is an 8(a), woman-owned small business formed in 2009. We provide a full spectrum of scientific, technical, and engineering services to inform and implement ecosystem-level solutions. We are committed to excellence and creating innovative and flexible solutions for challenging environmental problems for our Federal and local Government clients. We focus on serving federal, municipal, and private sector customers in environmental compliance, natural resource management, water resources management, geospatial applications, remediation, and climate adaptation.

### FEDERAL CONTRACTS

#### USACE-MOBILE

- Architect and Engineering (AE) Services to support the Environmental Quality (EQ) Program, CESAM, South Atlantic Division - Prime
  - W9127823R0037 | \$249M
- IDIQ for Base-Wide Environmental, Sustainment, and Modernization - Prime
  - 2021: W9127821D0051 | \$4.5M
  - 2024: W9127824D0016 | \$4.5M
- Environmental Remediation Services, Multiple Award Task Order Contract(s) (MATOC) - JV
  - 8(a): W9127823D0015 | \$30M
  - SB: W9127823D0005 | \$219M

#### DEPT. OF INTERIOR

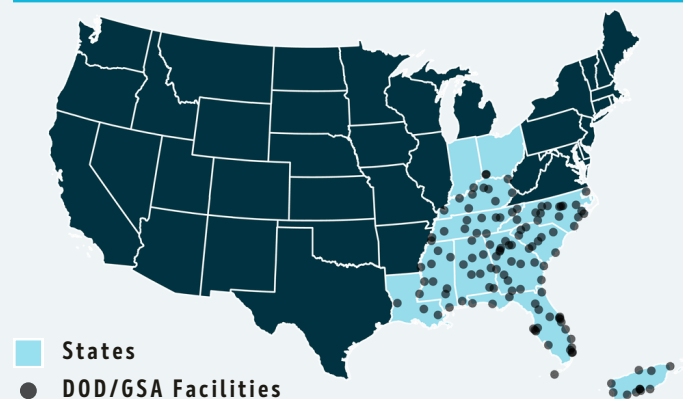
- Fence-To-Fence Environmental Services at PSFB, CCSFS, MTA, JDMTA, and APAFR - Water Quality - Subcontractor
  - 140D0423D0071 | \$22M

### SELECTED PROJECTS

- Sea Level Rise & SLOSH Modeling for Camp Lejeune - USMC
- WWTF Evaluation & Permitting - USSF
- TMDL Compliance Master Plans - USSF
- Canal Assessment & Management Plan - USSF
- Potable Water Survey - GSA
- Stormwater Pollution Prevention Plans - USSF
- Stormwater Management Plans - USSF
- Pre-Dredging Sediment Sampling & Analysis - USAF
- PFAS Sampling & Reporting - USSF
- Stormwater Improvement Feasibility Study at PSFB - USSF
- West KSC Nutrient Loading Study - NASA
- Stormwater BMP Design & Permitting - USSF
- Installation Climate Resilience Assessment - USAR
- Pre / Post-Construction Weir Monitoring - USSF
- Floating Aquatic Management Systems Implementation - USSF



### GEOGRAPHIC EXPERIENCE



[www.appliedecologyinc.com](http://www.appliedecologyinc.com)



321-499-3336



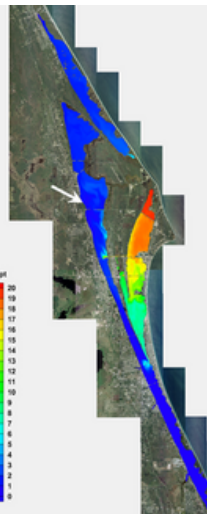
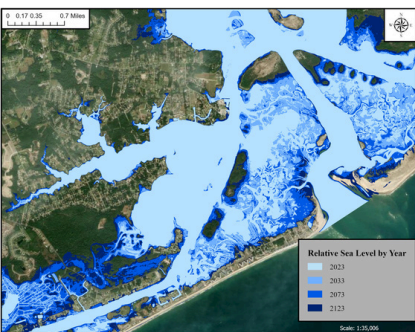
[support@AppliedEcologyInc.com](mailto:support@AppliedEcologyInc.com)

## MONITORING & ASSESSMENTS

- Groundwater, Surface Water & Stormwater Sampling
- Muck, Soil & Sediment Assessments
- Pre / Post-Dredge Material Monitoring
- Landfill Monitoring
- Harmful Algal Blooms
- Emergent Contaminant Sampling
- Sampling Plan Development
- Well Installation Oversight
- NPDES (MS4, MSGP) Compliance
- TMDL & BMAP Support
- Septic Vulnerability Assessments
- Seepage Studies

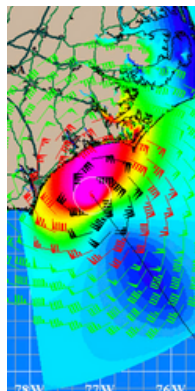
## ENGINEERING & STUDIES

- Green Infrastructure Design
- Stormwater BMP Design
- Flood Mitigation
- Dredging & Capping Solutions
- Effluent Treatment Evaluation & Design
- Hydrologic Structural Integrity Evaluations
- Living Shoreline Design & Permitting
- Sediment Management
- Wastewater Treatment Facility Evaluations
- Stormwater Quality Masterplans (Flooding, Water Quality, Resiliency)
- Beach Renourishment Planning & Design



## MODELING & CLIMATE RESILIENCY

- Watershed Model Development
- Water Quality & Pollution Simulations
- Groundwater Flow & Contaminant Transport Modeling
- Surface & Groundwater Modeling
- Nutrient Source Tracking
- 2-D & 3-D Numerical Modeling
- Hydraulic & Hydrologic Modeling
- Wind & Wave Energy Simulations
- Tidal & Current Simulations



- Storm Surge & Sea Level Rise Modeling
- Climate Assessments
- Vulnerability Studies
- Resilience Mitigation Design
- Feasibility Studies
- Nature Based Solutions
- Sediment Transport Modeling
- Climate Adaptation Mitigation
- Resilience Stormwater Masterplanning
- Shoreline Stabilization